

3G HCR STOPCOCK



The 3G HCR stopcock combines Jimten's valve design knowhow together with the 3G joining system and a high performance polymer to complete the Aliaxis service lines portfolio.

BRAND NEW COMPOUND

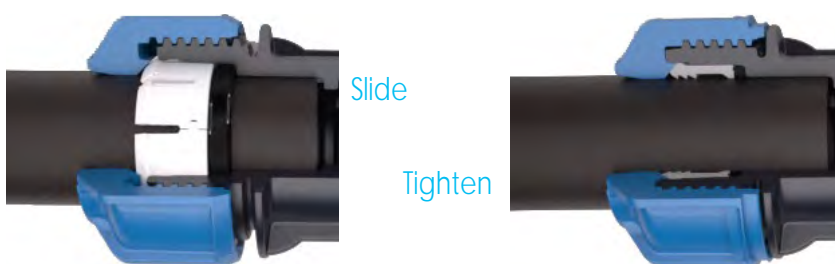
Thanks to long term testing performed together in conjunction with the Suez Research Center, Jimten selected the PPS compound for all parts in contact with potable water, a high performances thermoplastic material reinforced with glass fibers, to give the product extra toughness and durability.

Compared to metal alloys this compound is lead free, resistant to corrosion and scaling for easier and maintenance free operation. It achieves better mechanical and chemical resistance than other common plastics used to transport chlorinated potable water.

EASE OF INSTALLATION

On the inlet pipe side, the stopcock relies on the 3G Slide&Tighten™ technology, proof tested for over 10 years with its unique gasket and ring profile. 3G joint is ready for use without pipe preparation and slide effortlessly over the pipe for easier test assembly and installation.

Once fully tightened, the higher the service pressure, the better the water tightness.

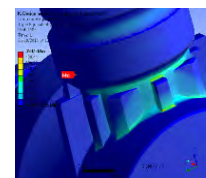


TOUGHNESS

The body, ball and stem design was refined through FEM and validated by specific mechanical testing (bending, 80 kg top load, etc.).

The threaded connection on the water meter side is dimensioned to withstand the same stress as metal parts, including the weight of an operator.

Water tightness is achieved with a standard flat seal inside the socket.



3G HCR

KEY FEATURES

- Toughness
- Corrosion resistance
- No chamfer
- Dynamic tightness
- Compactness

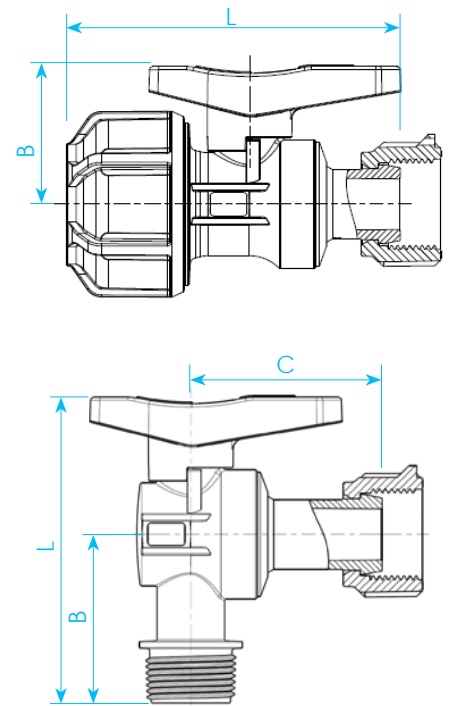
3G HCR STOPCOCK



RANGE & DIMENSIONS

Reference	Shape - junction	F	L	B	C	weight
2008313	straight - PE d 25 mm	3/4"	99	41	-	139
2008314	straight - PE d 32 mm	3/4"	119	41	-	197
2008316	elbow - PE d 25 mm	3/4"	108	64	45	145
2008335	elbow - PE d 32 mm	3/4"	122	78	45	193
2008315	straight - 3/4" male	3/4"	80	41	-	82
2008334	straight - 1" male	3/4"	80	41	-	89
2008317	elbow - 3/4" male	3/4"	107	50	57	90
2008336	elbow - 1" male	3/4"	107	50	57	97

(dimensions in mm, weight in g)



INSTALLATION



Recommended tools



1. Mark cutting length



2. Cut with dedicated pipe cutter



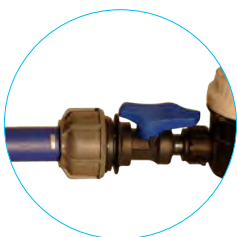
3. Slide 3G joint over pipe completely and mark insertion depth



4. Free pipe and position flat gasket



5. Tighten free nut on the water meter, using a wrench for the last 1/4 turn



6. Insert pipe and check the mark - gap must be less than 1cm



7. Tighten 3G nut until it touches the body



N.B.: handle can be dismantled and replaced by standard lock; index shows mounting direction

SPECIFICATIONS

- For LDPE & HDPE service pipes d 25 and 32mm.
- Service pressure : 16bar at 20°C (water).
- Test pressure: 24bar at 20°C (water).
- Body, ball and stem: GF reinforced PPS.
- Grab ring and nut: POM.
- Free nut: GF reinforced PA.
- Gaskets: EPDM.
- Cylindrical thread as per ISO 228-1.
- Drinking water approved (ACS).